



# THE CATHOLIC COMMUNITY FOUNDATION OF SANTA CLARA COUNTY

## Building *Forever Value* Through Endowments and Donor Advised Funds

*“Love God, serve God: everything is in that.”*

*St. Clare of Assisi*



### See inside for:

- 🍃 Impact of Grants
- 🍃 Creating a Lasting Legacy
- 🍃 Donor Advised Funds
- 🍃 Financial Update

Dear Friends,

As the Catholic Community Foundation continues to focus on providing *Forever Value* for Catholic ministry, we are increasingly aware and impacted by the generosity, faith and kindness of our community. With our gratitude for this support and for the gift of the Eucharist in our hearts, we become focused on sharing our own journey. We seek to inspire others to join us in planning for our futures with the hope of building a stronger tomorrow.

We focus on establishing endowment funds for our parishes and schools. We reach out to community advisors as a constant Catholic voice. We partner with individuals in Catholic philanthropy through Donor Advised Funds. We do all of this with the dream of financial security for our Catholic community so that the ministries that have formed us may continue to prosper. We are inspired as individuals and as an organization. This is our legacy.

Legacy encompasses the wisdom we have gained from our predecessors. It shares the knowledge that we have learned along the way and the hope, love and inspiration that has been given to us. It is what we choose to leave behind for the benefit of future generations.

Your legacy may be embodied in your writings, in your instructions to your children and in the values you will share. It may be the celebration of your life. It may include thoughtful financial planning so that your family, friends and parish may benefit from the many blessings you have received. Whatever your legacy will be, it will be yours.

We hope you will join us in our self-reflection and the dreams of enhanced Catholic ministry for generations to come.

God Bless,

Mary Quilici Aumack  
Executive Director

Ronald G. Pelzel  
Board Chair



# Grant Funds at Work in Our Community

(Right)  
Si Se Puede  
Dream Wall  
from Our Lady  
of Guadalupe  
Parish Summer  
Literacy Program

Dear Catholic Community Foundation,  
Thank you for the money you gave to the youth ministry at my parish. The way they used the money was very smart. They bought a bunch of cool stuff for us to use. I really like using the supplies they bought. This place is so much cleaner, neater, and better thanks to you.

From,  
Colleen

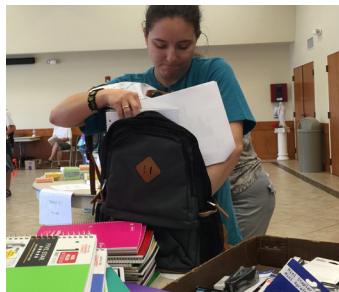
A 2014 grant helped Holy Family Parish launch *Holy Homework*. The program is open to all local children in grades 6–12. *Holy Homework* provides a safe and fun environment for children to work on school assignments and make new friends.



(Above) Saint Maria Goretti's Youth Group with Fr. Greg Boyle, a speaker at the 2015 LA Youth Day.



(Above) Santa Teresa's Youth Group at their Annual Retreat.



(Left) St. Lucy Parish provided 106 backpacks full of school supplies to 49 families in 2015.



(Above) Youth Day 2015 at Holy Korean Martyrs Parish.

## Message from a Pastor

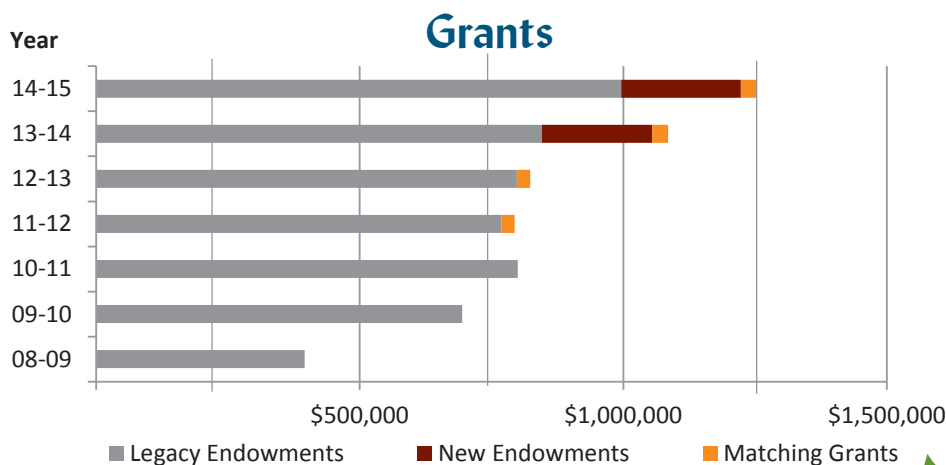
As pastor of Our Lady of Guadalupe Parish I have seen how the Catholic Community Foundation has helped my community.

This year we received a grant to help us with our immigrant integration and legalization program. The grant allowed us to partner with Catholic Charities to train staff helping our parishioners navigate the legal system.

Our parish also received support from the Foundation in our summer literacy program for at-risk youth. Together with St. Francis of Assisi, Most Holy Trinity, St. Maria Goretti and St. John Vianney, our deanery helped children advance their reading skills in a safe environment. Our Lady of Guadalupe Parish's summer program helped children gain 9 months of literacy development in just 4 weeks!

Our Lady of Guadalupe is a center of help and hope, and the Foundation helps us serve our community.

God Bless,  
*Fr. Jon Pedigo*  
Fr. Jon Pedigo



Cummulative grants from endowments equals \$5.8 million.



# Legacy

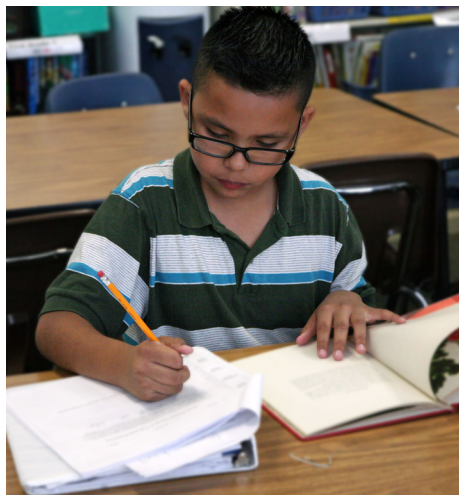
**Do you want to provide for both your family and your parish in your legacy plans?**

Caring for the important people and ministries in your life does not require significant savings accounts. Rather than leaving a specific sum or piece of property to each, consider organizing your planning by percentage. You might choose to leave 90% of your estate to your family and 10% to your parish. This assures that unforeseen circumstances will not interfere with the proportionate distribution of your estate to both your family and parish.

“Legacy planning can offer recognition of the Catholic ministries that have contributed to the people you and your family have become. For this reason, I invite you – in addition to the gift you will give your family – to consider also making a gift toward ongoing and lasting support for one or more of the good works done in the name of the Church.” *✦ Bishop Patrick J. McGrath*



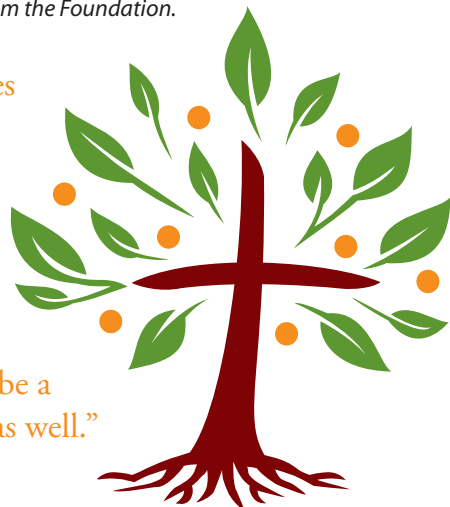
John M. and Timi Sobrato celebrating Catholic social presence in Santa Clara Valley at the Building Through Faith gala, sponsored by the Catholic Community Foundation.



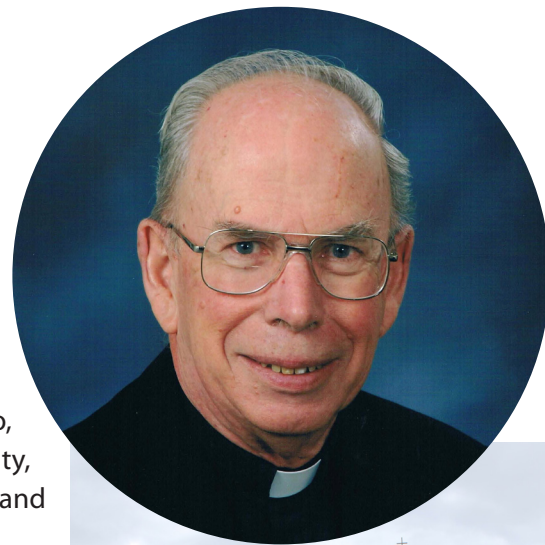
Students receive tutoring services at the Sacred Heart of Jesus after school homework program with the assistance of grant funds from the Foundation.

“The Catholic Community Foundation provides a continuum of services, from Donor Advised Funds to the opportunity for permanent lifetime or estate gifts to benefit Catholic ministry. Using the Foundation as a conduit for our philanthropy provides important benefits to us as well as to the local Catholic community. We believe the Foundation would be a great partner for many other Catholic families as well.”

*✦ Timi and John M. Sobrato*



Monsignor Terrence Sullivan was ordained to the priesthood in 1964. Prior to his retirement in 2009, Fr. Terry served as director of catechetical ministry for the Archdiocese of San Francisco, which included Santa Clara County, pastor at St. John Vianney Parish, and Vicar General to Bishop DuMaine.



In 1992, Fr. Terry was assigned as pastor at St. Lucy Parish in Campbell. During the 17 years he remained there, he forged a special bond with the community of St. Lucy, a bond that he sought to remember in his legacy planning.



“Because of being there so long,” Fr. Terry states, “St. Lucy Parish is dear to me. As a legacy, I wanted to do what I could to establish a parish endowment that could grow over the years. With an endowment, the parish could be assured of regular income and not remain dependent on occasional donations that did not always come in.”

In 2015, Fr. Terry made a contribution to the Catholic Community Foundation to establish an Endowment Fund for St. Lucy Parish in honor of his legacy there.

Each year, the endowment will generate funds to support the ministries of the parish, a gift that will continue for future generations.

“St. Lucy Parish is dear to me. As a legacy, I wanted to do what I could to establish a parish endowment that could grow over the years.”

Fr. Terry recognizes the importance of endowed funds in reducing the pressure of fundraising on the parishes. Accordingly, he also plans to contribute to the Priests’ Retirement Fund, as well as the Pastoral Ministry Training and Formation and the Parish Outreach funds at the Foundation.

Monsignor Sullivan hopes his legacy plans will inspire others to recall the ministries that have formed them, “I would like to encourage people to see how ministries that are dear to their hearts may be better funded through endowments that will ensure continual income over the years.”

Monsignor Sullivan hopes his legacy plans will inspire others to recall the ministries that have formed them, “I would like to encourage people to see how ministries that are dear to their hearts may be better funded through endowments that will ensure continual income over the years.”

## A Lasting Legacy of Endowment

**Did you know that you can endow your annual giving and leave a legacy of *Forever Value*?**

If you currently donate \$1,000 annually to your parish or another Catholic organization, a one time contribution of \$25,000 can ensure that your \$1,000 yearly gift continues in perpetuity, for your lifetime and beyond!

A donation of \$25,000 today will establish an endowment to benefit your parish or the Catholic organization of your choice. An endowment generates grants to the designated organization from its investment earnings alone. The endowment’s capital is never drawn upon and therefore never depleted. Your designated beneficiary will receive your gift for generations to come, without requiring any additional monetary contribution from you!

**Store up for yourselves treasures in heaven, where moth and rust do not destroy, and where thieves do not break in and steal. For where your treasure is, there your heart will be also. ✦ Matthew 6:20-21**



# Donor Advised Funds



Catholic schools and youth programs in our Diocese thrive with the help of grant funds.

## Have you had a large taxable event or need to offset capital gains?

Establishing a Donor Advised Fund at the Catholic Community Foundation may be the solution for you. A Donor Advised Fund is a charitable giving vehicle offered by a public charity that allows a donor or donors to make a one-time donation, receive full tax benefits for the year and grant to eligible non-profit organizations at their own pace with no timing or payout restrictions. It is an ideal tool for any individual who is in need of a charitable tax deduction but has not yet decided which causes or organizations they would be most inclined to support!



The Foundation's Parish Outreach Fund enables social ministry programs to serve their community.

If you have a Donor Advised Fund with another organization, consider demonstrating your commitment to Catholic values by transferring it to the Catholic Community Foundation. It only requires a simple one-time grant!



Visit our website at [www.cfoscc.org](http://www.cfoscc.org)

The Catholic Community Foundation currently manages over \$2.5M in Donor Advised Funds. Our Donor Advised Funds allow us to keep philanthropy focused on Catholic ministry and provide an opportunity for donors to give through the Foundation to the nonprofit organizations they love.

We are the only Catholic provider of Donor Advised Funds in northern California. Our Catholic identity allows us to ensure our donors and the community that funds are always invested in alignment with Catholic values and will never be used to support an organization engaging in practices antithetical to Catholic beliefs.

Donor advisors may advise grants from their funds to any eligible nonprofit organization. Many choose to grant funds to their parish and the elementary and high schools of the Diocese. Others may grant to their alma mater or a local food bank. Some choose to give to non-Catholic social ministries such as those that provide services to the handicapped, oppressed or homeless of the community.

Through our Donor Advised Fund grants, we, and our generous community, have made an impact throughout the Santa Clara Valley as well as the nation. Our grants have reached as far east as St. Louis and New York, and have aided the work of national outreach organizations such as Catholic Relief Services.

As a result of our robust grantmaking activity, we have become knowledgeable of many wonderful organizations that need our help. We educate donors, match generous intent with unmet needs, and ultimately increase the breadth and effectiveness of Catholic philanthropy.

*“Our Donor Advised Fund with the Catholic Community Foundation simplifies our annual giving. We are able to support our parish and other nonprofit organizations without having to make multiple payments or maintain multiple tax receipts, and we can add funds when it makes sense for our tax planning. We rest assured that the Foundation is professionally managing our funds in line with our Catholic values.”* *— Maria and Eric Bellafronto*

## Financial Snapshot

(\$ 000's)

	12 months Ending 6/30/15	12 months Ending 6/30/14
<b>Beginning Balance</b>	42,700	32,000
<b>Contributions from Families For:</b>		
Endowments	100	300
Donor Advised Funds	2,200	600
Unrestricted	1,300	600
<b>Organization Endowment Transfers</b>	200	7,000
<b>Gains/(Losses)</b>	(60)	4,200
<b>Grants from:</b>		
Endowments	1,250	1,100
Donor Advised Funds	100	-
Other	200	100
<b>Operations</b>	800	800
<b>Ending Cash &amp; Investments</b>	44,100	42,700



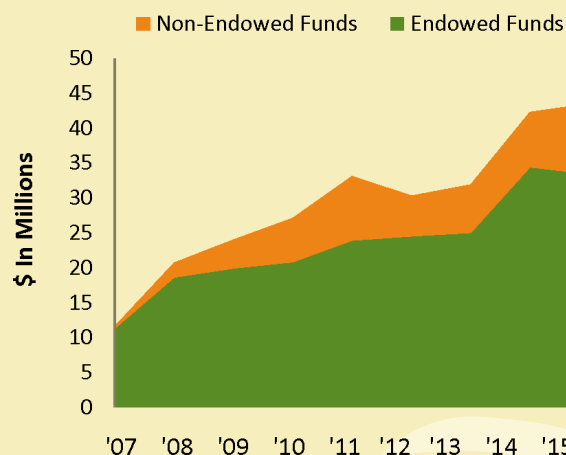
## Foundation Board

- Ronald G. Pelzel, *Chair*
- Thomas Hogan, *Secretary*
- Patrick J. Waite, *Treasurer*
- Philip J. Anthony
- Jerome A. Bellotti
- James P. Cashman
- Thomas Crotty
- Gerry Ferrari
- Felipe Luna
- Bertha Minnihan
- Kathleen Muller
- John M. Sobrato
- Charmaine Warmenhoven

## Foundation Staff

- Mary Quilici Aumack
- Maria Apodaca
- Sean Finigan
- Rudy Garcia
- Anne LeClair
- Brianna Martin

## Investment Balances at June 30



Building *Forever Value* Through Endowments and Donor Advised Funds